

# KDC connections

Winter 2017

A Publication of Kennedy-Donovan Center

Supporting over  
6,000 children,  
adults and families  
annually.



*After sixteen months  
of construction, we have  
finally moved into our spacious  
new administrative building.*

## New Home, Same Mission

We are back home! After sixteen months of construction, we have finally moved into our spacious new administrative building. Construction began in September of 2015, and was completed by KAMP Construction of North Carver.

We are excited to share this news with our supporters who have been following the progress over the past year. "The new administrative offices will allow us the greatest opportunity to support staff in the field to provide quality services to the children, adults and families who turn to us every day," said KDC President & CEO Aubrey Macfarlane.

In February of 2016, the old building was demolished, and the lot was cleared for construction. It was a bittersweet moment for employees with a long tenure who looked on during the demolition. While the

administrative offices were temporarily located across the street, staff were able to drive by and watch the progress throughout the months of construction. The staff is excited about the new facility and its visibility, while also maintaining the convenience of being adjacent to the major highways.

Over the last decade, KDC has experienced over 15% growth in programs, services and support staff. We simply outgrew the old building which served as home since 1991, and renovation simply would not have met current or future needs. Our new facility accommodates existing staff and will allow for future growth so we can continue to focus on our mission of providing services that are individualized, compassionate, and innovative.



*Our new Foxboro administration offices at One Commercial Street.*

KDC Connections is published by Kennedy-Donovan Center for the agency's volunteers, families, supporters, and those to whom we provide services and supports of the highest quality.

Aubrey Macfarlane, President/CEO  
Maria Barbosa, Editor

**Administrative Offices**  
One Commercial Street  
Foxboro, Massachusetts 02035  
508-772-1200 | kdc.org



## events calendar

### FEBRUARY 28

MAAPS Legislative Reception. 9:30 to 11:30 a.m., New Bedford. Hosted by Representative Antonio Cabral.

### MARCH 7

Snow Date for MAAPS Legislative Reception.

### MARCH 24

Cape Cod Open House and Legislative breakfast at the new West Yarmouth Programs Center.

### APRIL 1

Spring Celebration; 6 p.m. at Lombardo's, Randolph.

### APRIL 27

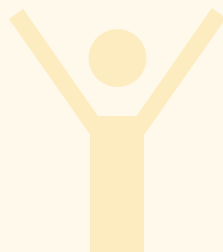
Board of Director's meeting, Foxboro office.

### JUNE 19

Plymouth Golf Tournament; Indian Pond Country Club.

### JUNE 29

Board of Director's meeting, Foxboro office.



## Generous Grants Awarded to KDC

Since our last newsletter, KDC has received four generous grants to help enhance our programs and services. With the support of community foundations we are able to grow our existing programs and build new services to reach more people in need.

We received program grants that included an \$1,800 grant from the Edwin S. Soforenko Trust for the purchase of equipment for our Communication Project for adults with developmental disabilities; a \$2,000 grant from the New Bedford Day Nursery Fund will help purchase much-needed equipment and supplies for our Greater New Bedford Early Intervention program. The program's Child Group room had not been updated in over ten years and along with a previous grant

from the Roy T. Morgan Foundation, KDC was able to make the essential upgrades for a comfortable and safe room for the children. We also received a \$3,750 grant from Bailey's Team to continue the launch of our Applied Behavior Analysis Program.

Finally, a \$12,000 grant from the Greater Worcester Community Foundation will enable us to implement year two of 'Fostering Early Connections,' a specialized mental health program for families in twelve communities in Southern Worcester County. The program serves some of the communities' most vulnerable, specifically those under the age of three who are involved with the Massachusetts Department of Children and Families with possible developmental delays.

## Introducing KDC's Newest Board Member

Tim Mulcahy became the newest member of the Board of Directors in October of 2016. We are excited to have him join our strong leadership board.

Tim is Senior Vice President and Head of Distribution Support at Fidelity Investments Asset Management, where he has spent over 18 years in a variety of roles. He lives in Franklin, with his wife, son and daughter. "I became interested in KDC for two reasons. First being that as a father of a child with an autism diagnosis, I understand how important access to resources such as those provided by KDC can be to families and individuals. While our family hasn't accessed KDC services personally, I came to learn about the organization through a co-worker and fellow board member and was impressed by the mission and scope of the organization," said Tim.

We wish to thank outgoing board members Ronald Carlstrom and Debbie Felix for their

many years of service. Debbie will continue to be a great asset as a member of the Human Resources Committee of the board.



## Support KDC When You Shop Online

AmazonSmile is a simple and automatic way to support your favorite charitable organization at no additional cost to you. When you use smile.amazon.com, you'll get the same low prices, selection and convenience, but Amazon.com donates a portion of the purchase price to the organization of your choice. Make KDC your charity of choice at smile.amazon.com.



## New Bedford Early Intervention Holiday Party

Kennedy-Donovan Center's New Bedford Early Intervention Program spread holiday cheer when the North Pole came for a day of fun and celebration.

Children and their families were able to sit back, watch a holiday movie, enjoy snacks,

and participate in art activities with their loved ones. There was also a special visit from Santa, Mrs. Claus, and some cheerful elves. It was so much fun to see our families come together and enjoy this special day together.



*Shakyla, Mike and Nova enjoy a visit with Mrs. Claus.*

## Annual Holiday Appeal Raises Over \$70,000

Thanks to the generosity of our supporters, KDC has raised over \$70,000 to date, and we're not done yet! A gift to the Annual Fund provides additional resources and flexibility, and allows us to respond in a timely way to the children, adults and families needing our services beyond what is covered by state contracts.

"I gave to KDC because as a board member, I see first-hand how its services impact the community and benefit so many individuals and families in need," said Rich Harwood, KDC Board Member.

Your gift makes a difference, and supports the mission of our founder, Luella Hennessey Donovan. Mrs. Donovan was the private nurse for Joseph and Rose Kennedy whose daughter Rosemary had developmental disabilities. It was their wish for her to have a typical life. Mrs. Donovan was inspired to open one of the first community-based educational and therapeutic programs for young children. This would not have been possible without a generous three-year grant from the Joseph P. Kennedy Foundation. Now almost 50 years later, her forward thinking has allowed us to build upon the roots she

established to support over 6,000 children, families and adults annually.

There's still time to donate, become a member of the Luella Leadership Circle with your gift of \$1,000 or more. To donate, please visit our website at [kdc.org/donate-now](http://kdc.org/donate-now).



*KDC Board member, Rich Harwood*



## MISSION

Kennedy-Donovan Center supports people with developmental delays, disabilities or family challenges to pursue their personal potential and success in the community. We provide a wide range of effective supports to individuals and families through prevention, advocacy and intervention services that are person-centered, innovative, and compassionate.



## Holiday Donor List

We are grateful to the many businesses and individuals who donated gifts of time, talent, and treasure this past holiday season. Your generosity made the holidays a little nicer and brighter for the hundreds of families and individuals we support who were in need this year.

Barry's Wine & Spirit

Bayside Restaurant and Lounge  
Toy Drive

Bishop Feehan High School

Cymry's Wish List

Dunkin Donuts  
Dartmouth Street, New Bedford

Stop & Shop  
Huttleston Avenue, Fairhaven

Dunkin Donuts  
Kempton Street, New Bedford

ENT Specialists

John and Aubrey Friedman

Joseph, Josephine & Maria Gomes

Good Deeds Ministries, Ken Sylvia

Holy Family/Holy Name Parish

Karl Storz, Inc. Hispanic Outreach  
Team

KIDS Do Count 5K Participants

St. Marks Church, Attleboro

Karen Warchol and Family

We apologize if we inadvertently omitted, or incorrectly listed your organization or name. Call 508-772-1216 with any questions or concerns.

## Dorel Juvenile Group Continues its Support

Located in Foxboro, Dorel Juvenile Group has been a longtime supporter and friendly neighbor of Kennedy-Donovan Center. Nearly ten years ago, KDC became a beneficiary of their generosity, as they provided dozens of toys for infants and toddlers in our Early Intervention, Healthy Families and Foster Care programs.

Dorel Juvenile Group has been helping to provide a safer world for children for over thirty years. Their wide range of products includes car seats, strollers, high chairs, play yards, monitors, childproofing products, and more. We thank Dorel Juvenile Group for their continued support and for helping so many of our families.

## Holiday Gift Wrapping at Barnes & Noble

KDC's Foster Care Services program staff partnered for the second year with Barnes and Noble in Dartmouth to wrap holiday gifts free of charge! Kelley Medeiros, Senior Director of Children Services, and Eileen Dugas, Program Director of Foster Care

Services, along with other KDC staff members wrapped gifts while educating the community about our foster care services and the benefits of being a foster parent. A donation jar raised over \$400 in support of KDC's efforts.



## Department of Developmental Services Licensing Completed

KDC is proud to announce that we have received our two-year Licensure and Certification for Residential, Individual Home Supports and Employment/Day Supports from the Department of Developmental Disabilities. KDC is committed to continuous quality improvement and adherence to best practice standards for service delivery to all of the individuals and families we serve.

"The review by the DDS survey team identified a number of accomplishments on the part of the agency which resulted in

positive individual outcomes. Some of the noted accomplishments were health care, environment, relationships, personal choice and community based employment supports. "KDC has taken the recommendations from the Department of Developmental Services and will build on them as we strive for continuous quality improvement with a focus and emphasis on positively impacting the lives of the people we serve," said Kate Fontana, Vice President of Operations and Organizational Development.

## Giving Tree Gives to KDC for the Fourth Year

A big thank you to Alicia Jane Medeiros who has organized the 'Giving Tree' for KDC's New Bedford Early Intervention and Healthy Families Programs since 2012 and it has grown every year. With the generous support of her friends, family, and co-workers at Charlton Memorial Hospital, St Luke's Hospital, and Prima Care Ambulatory Clinic,

she coordinated the assigning, tagging, wrapping, and delivering of over 70 presents this year for both Early Intervention and Healthy Families in New Bedford. We thank Alicia for finding time in her busy schedule to make the holidays sweeter and brighter for our children!



Left to right: Allison Neville, Alicia Medeiros, Sarah Medeiros and Taylor LaFountain

## Kennedy-Donovan Center School Gets an A+

In September 2016, KDC's Special Education School completed its three-year Department of Elementary and Secondary Education (DESE) Mid-Cycle Review. Two chairpersons from DESE conducted a two-day review which included administrative and staff interviews, student and staff record review, document review, parent surveys, and facility observations.

We are proud to announce that the KDC School received a perfect score! To achieve a perfect score means there were no areas identified in which the school was not in compliance with the regulatory requirements. Every aspect of the school program met DESE's complex requirements.

The KDC School staff is to be commended for their hard work and dedication to the school, the students, and the families. Congratulations KDC School staff!



## BOARD

Robert Panessiti, Chair  
*UBS Financial Services*

Patricia Forts, Vice Chair  
*Harvard Pilgrim Health Care*

Stephen Sanford, Treasurer  
*IneoQuest Technologies*

Anthony Karamas, Clerk  
*Fidelity Investments*

David Boucher  
*5 Capital Management*

Edwin "Ted" Carr  
*International Trade & Investment*

Kelly Courtney  
*Pipeline Management*

Kelly DiPersio  
*Alumna Parent*

Richard Harwood  
*Baystate Financial Group*

Joseph Hulbig  
*Providence College*

Jeffrey Kobs  
*John Hancock Retirement Plan*

Timothy Mulcahy  
*Fidelity Investments*

Bradford Pineault  
*Fidelity Investments*



## Programs Overview

### ACQUIRED BRAIN INJURY SERVICES

24/7 support for those with acquired brain injuries in a staffed community residence.

### ADULT FAMILY CARE

Finds homes for adults with medical needs with trained host families.

### APPLIED BEHAVIOR ANALYSIS

Customized services for those with Autism Spectrum Disorder, and their families.

### DAY HABILITATION

Provides adults with high needs a comprehensive program of services.

### EARLY INTERVENTION

Home services for children birth to 36 mos. with, or at risk of, developmental delays.

### FAMILY SUPPORT & RESPITE SERVICES

Supports individuals living with their families in receiving tailored services.

### FOSTER CARE SERVICES

Works to prevent out-of-home placements; places children in qualified homes; and aids young adults transitioning to independence.

### HEALTHY FAMILIES

Serves first-time parents age 21 or under until the child's third birthday.

### INDIVIDUAL SUPPORT

Serves adults living on their own by providing drop-in support for daily living.

### SHARED LIVING

Finds adults homes with host families trained to address their specific needs.

### SPECIAL EDUCATION SCHOOL

For ages 3 to 22 with multiple disabilities.

### SUPERVISED LIVING

24/7 support for adults living in groups of two to four in neighborhood homes.

### SUPPORTED LIVING

Provides on-going supports to adults with disabilities living in their own homes.

### TRANSITIONAL JOB SUPPORT

Assists adults in finding and maintaining meaningful paid employment.

## Poker Run Raises \$12,000 for KDC

Nopper Marine of Fairhaven hosted the third annual Poker Run last September and presented a \$12,000 donation to KDC to help support people with developmental disabilities.

The Nopper Marine Poker Run started just before noon on September 10th at Earl's Marina in Fairhaven. 30 cigarette boats, ranging from 24 feet to 40 feet, docked off from Earl's Marina and cruised the waters of Buzzards Bay, making a total of four stops. Cash prizes were awarded for the First Place

Captain's Hand, Second Place Open Hand, and a Third Place prize. This year, each winning team decided to donate their prizes to Kennedy-Donovan Center.

In three short years, Nopper Marine and friends have raised more than \$27,000 for KDC. A group of friends gathering together to do what they love in support of people with developmental disabilities. Peter Nopper has already announced a goal for this year's Poker Run—forty boats!



Left to right: Heidi Pereira, Peter Nopper, Beth Camara, Victor Viera, Aubrey Macfarlane, Matthew Hebert, Ann Buono, Jim Broughton and Georgette Nopper.

Save  
THE date!

### Spring Celebration

Saturday, April 1 at 6 p.m.  
Lombardo's Randolph  
Dinner, Dancing and  
Auctions

Purchase tickets online at  
[kdc.org/springcelebration2017](http://kdc.org/springcelebration2017)  
or contact Maria Barbosa at  
508-772-1216.



## Loyalty Donors Club

We would like to pay tribute to our Loyalty Donors. These supporters have made a donation for six consecutive years or more. We are honored by their commitment to KDC and their vision of continued services for some of our communities' most vulnerable people.

Advance Air and Heat  
Maria O. Barbosa  
Rick Bornstein  
David and Kim Boucher  
Bowdoin Construction Company  
Bristol County Savings Charitable Foundation  
Ann and Ray Buono  
Ron and Marcy Carlstrom  
Ted and Tanya Carr  
Eugene and Edna Carroll  
Casey Law Offices  
John and Jean Connors  
Robert J. D'Amelio  
Mark and Margaret Davis  
Joseph and Kathy DiSabato  
Kelly DiPersio  
Daniel and Cheryl Farley  
Mrs. Frances Fern and Family  
Ron and Debbie Felix  
Fernandes Masonary, Inc.  
Arno Gartzke  
Joseph and Josephine Gomes  
William and Ellen Goodchild,  
Lynn Goodchild Memorial Scholarship Fund  
Rabbi and Mrs. Barry Hartman  
Rich and Diana Harwood  
Thomas and Jennifer Hickey  
Susan Hurley  
IneoQuest Technologies, Inc.  
Thelma Janock  
Anthony Karamas  
John and Kathy Korona

L. Knife & Sons  
Maria Listenfelt  
Arthur and Kathleen Lyons  
George and Kathryn Manchester  
Kenneth and Diane Mandile  
Mansfield Bank  
Rich and Karen McGuinness  
David and Joyce McDonnell  
Daniel and Julia Moniz  
New Bedford Rifle and Revolver Club  
Donna Noll  
Robert and Carol Peecha  
Van and Roberta Ritter  
Rodman Ride for Kids, Don Rodman  
Rotary Club of Foxboro  
Steve and Jill Sanford  
Sensata Technologies  
Douglas and Eileen Slone  
Jeffrey and Arlene Tannenbaum  
Francis and Regina Tate  
Ann Taylor  
Technical Support International, Inc.  
Telamon Insurance Network  
Tichon Seafood Corporation  
William and Linda Travers  
United Way of Greater Attleboro/Taunton  
Michael and Jane Vannata  
Jack and Paula Vercollone  
Edward and Erin Walter  
Webster Bank  
Irwin Yanowitz and Ellen Role



Kennedy-Donovan Center is committed to the full continuum of care for people with developmental delays, disabilities or family challenges in our region. We strive to provide this either by offering services directly to individuals of all ages and their families or by collaborating closely with community partners. Our growth will target programs that:

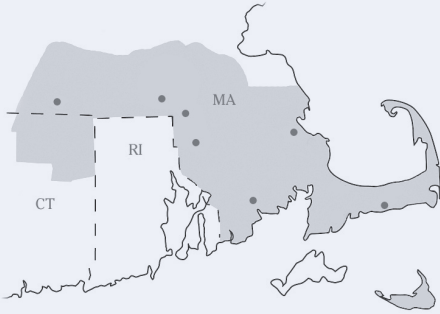
- Fill service gaps in the continuum of care for our clients
- Focus on individualized one-on-one services
- Are needed in our current service area or adjacent regions
- Build on our current expertise
- Respond to a need for innovative and flexible programming



## PLEASE SAVE YOUR BOX TOPS for the New Bedford Special Education School

KDC School | Attention Stephanie  
19 Hawthorn Street | New Bedford, MA 02740  
508-992-4756





Attleboro | Foxboro

Kingston | Milford

New Bedford | So. Yarmouth

Southbridge

## Holiday Appeal: Help Jump Start Giving

We have raised over \$70,000 to date for our 2016-2017 Holiday Appeal. Every dollar goes directly to programs and services, and encompass needs that aren't provided

through state contracts or insurances. Make your tax-deductible donation by filling out the form below, or make a secure donation at [kdc.org](http://kdc.org).

Yes, I want to help jump start the Holiday Appeal.

I wish to make a difference with a gift of:

☐ \$250   ☐ \$200   ☐ \$100   ☐ \$50   ☐ \$25   ☐ other \$ \_\_\_\_\_

☐ I'd like my gift to be anonymous   ☐ Company matching gift program; form enclosed.

This gift is:   ☐ in memory of   ☐ in honor of \_\_\_\_\_

Name \_\_\_\_\_

Street \_\_\_\_\_

City/Town \_\_\_\_\_

City/Town \_\_\_\_\_

State \_\_\_\_\_

Zip \_\_\_\_\_

Method of payment   ☐ Check enclosed   ☐ MasterCard   ☐ Visa

Cardholder name \_\_\_\_\_

Credit Card Number \_\_\_\_\_ Expiration Date \_\_\_\_\_

☐ I would like to speak with someone about putting KDC in my will.

Please detach form and mail to: Kennedy-Donovan Center, One Commercial Street, Foxboro, MA 02035. **YOU MAY ALSO MAKE A SECURE DONATION AT [KDC.ORG](http://KDC.ORG).**

THANK YOU FOR YOUR SUPPORT!

Exciting KDC News

Nonprofit Org.  
US Postage  
PAID  
Brockton, MA  
Permit No. 679

One Commercial Street  
Foxboro, MA 02035

